



Expertise

Protocol number: 39745791  
Order No. / Reference: 24606927  
Inspection date: 15 May 2025

Manufacturer: Peugeot	Model: 508 SW Hybrid 225 e-EAT8 GT
VIN: VR3F4DGZTMY551925	



Vehicle details	
Manufacturer / Type / Model / Equipment	
Peugeot 508 SW Hybrid 225 e-EAT8 GT	
Vehicle Identification number	VR3F4DGZTMY551925
Mileage (Read)	148,690 km
First registration	28 Apr 2022
Number of holders	1
Power / Engine displacement	133 kw / 1,598 ccm
Fuel type / Cylinder	Hybr.B/E ext. edition / 4
Gearbox / Number of gears	Automatic / 8
Type of drive	Front drive
Type of vehicle	Station wagon
Colour / colour code	Platinum Grau Metallic
Doors / Seats	5 / 5
Upholstery type	Cloth / leather combination
Colour of upholstery	Black



## Vehicle details

<b>Maintenance booklet / proof</b>	digital proof / incomplete	<b>Next maintenance in</b>	
<b>Last maintenance on / at</b>	04/2023 at 23,666 km		
<b>Key is / should be</b>	2 / 2	<b>FZG documents</b>	ZB#2 (B) was available (copy), ZB#1 (S) was not available
		<b>Letter No.</b>	GA851290
<b>Previous damage / Accident</b>	Detectable	<b>Repainting</b>	Detectable
<b>Inspection conditions</b>	Sufficient	<b>Lifting equipment / pit</b>	yes
<b>Test drive</b>	Not performed	<b>Engine function test</b>	Performed
<b>Manufacturer key number/ type code number</b>	1889 / ADY 00009		
<b>Emission standard</b>	EURO6;WLTP;AP;PI/CI; M, N1 I	<b>Fine dust sticker</b>	
<b>Permitted total weight</b>	2,290 kg	<b>Empty weight</b>	

## Tyres

### Mounted tyres

#	Tyre size	Type of tyre	Manufacturer	Tread depth
1)	215/55 R17 98H	Winter tyres on Light alloy	Pirelli	4mm / 4mm
2)	215/55 R17 98H	Winter tyres on Light alloy	Pirelli	4mm / 4mm

### Additional tyres

#	Tyre size	Type of tyre	Manufacturer	Tread depth
1)	235/45 R18 98Y	Summer tyres on Light alloy	Michelin	1mm / 1mm
2)	235/45 R18 98Y	Summer tyres on Light alloy	Michelin	3mm / 3mm

### Replacement

Typ	Tyre size	Type of tyre	Manufacturer	Tread depth
	Tirefit	Expiration date 08/2026		

**Legend:** Tread depth information for tires on the left is in the first place, for tires on the right is in the second place on the axle in the direction of travel



## Equipment

### Standard equipment

- ABS (anti-lock braking system)
- Airbag for driver and front passenger
- Airbag: Curtain airbags front and rear
- Automatic cruise control ACC with STOP & GO function
- exterior mirrors in Perla Nera Black
- Hill start assist
- On-board computer
- Black headliner
- Decorative inlays in carbon look
- double-pipe exhaust with chrome-plated tailpipes
- tachometer
- Rear parking aid, acoustic and visual
- Electronic Stability Program (ESP)
- High beam assistant
- Follow-me-home function (automatic)
- full-LED headlights
- Luggage compartment blind
- Cup holder in the center console
- Heated rear window
- Rear apron with diffuser look in black
- Map pockets on the front seat backrests
- Manual parental control
- headrests height adjustable
- Charging cable: Mode 2 charging cable (Type 2, up to 2.3 kW), 6 meters long
- LED ambient lighting in blue on the front door panels
- LED daytime running lights
- Steering wheel: Small multifunction leather steering wheel flattened at the top and bottom
- Rear center armrest with loading flap
- Multifunctional touchscreen
- Fatigue warning
- Emergency braking assistant
- Particle filter: OPF gasoline particulate filter
- aluminum pedals and stainless steel door sills
- Upholstery: Decorative stitching in copper on the dashboard
- Radio accessories: Digital radio reception DAB+
- Tire pressure monitoring system
- Wheels: Tire repair kit (compressor + puncture spray)
- Shift paddles on the steering wheel
- Seats: Passenger seat height adjustable
- Seats: Driver's seat height adjustable
- Sport mode
- Technology Plug-In Hybrid Version
- Traffic sign recognition
- Immobiliser
- High-gloss black trim strips on the side windows
- Active Safety Brake Plus
- Airbag: side airbag
- Active Blind Spot Assist
- Exterior mirrors electrically adjustable, heated and foldable
- Illuminated glove compartment
- Turn signals with lane change tip function
- Brake light, third
- Roof rails in high-gloss black
- Digital instrument cluster with high-resolution 12.3" screen, adjustable and customizable
- EBV (Electronic Brake Force Distribution)
- Front parking aid, acoustic and visual
- Electric windows front and rear
- Electric parking brake
- Forward collision warning
- Floor mats front and rear
- Transmission: 8-speed automatic transmission EAT8
- Belts: 3-point safety belts on all seats
- Rear window and side windows in row 2 more tinted
- Interior mirror automatically dimming
- keyless system
- Automatic climate control (2-zone)
- Radiator grille in racing flag pattern in "Dark Chrome"
- LED ambient lighting in the front footwell
- LED ambient lighting in blue on the dashboard
- LED ceiling lighting at the front
- 18" "Spereone" alloy wheels, two-tone
- Light sensor
- Makeup mirror
- Front center armrest
- Multimedia: Mirror Screen
- Navigation system: 3D navigation system NAC
- On-board charger 3.7 kW, 1-phase
- Break warning
- Upholstery: fabric/synthetic leather
- Radio: RCC audio system
- Radio accessories: 2 USB ports (Type A) in row 2
- Rain sensor
- Wheels: Anti-theft wheel bolts
- Rear view camera with 180° surrounding view
- Power steering, electric
- Seats: Ergonomic comfort seats with AGR seal of approval
- Seats: Rear seat bench and backrest 40/60 split folding
- lane keeping assistant with steering intervention
- Glazing: Windscreen made of laminated glass, sound-insulating
- Central locking can be activated from the inside with radio remote control



### Extra equipment

- inductive charging station
- Charging cable (aftermarket)
- Seats: Heated front seats (GT)
- Paintwork: Special metallic paintwork
- On-board charger 7.4 kW, 1-phase

### Brief expert findings

Documents submitted	At the time of the inspection, the registration certificate part 2 (letter) was available, but the registration certificate part 1 (certificate) was not available. (Copy)
VIN comparison	The vehicle identification number (VIN) was read and the undersigned verified that it matched the documents submitted during the inspection.
Inspection	The inspection conditions were sufficient for the assessment of the vehicle. Lifting equipment and a pit were available for examining the vehicle.
Test drive	No test drive/maneuvering was carried out during the inspection of the vehicle.
Engine function test	An engine test run was performed.

### Value reducing factors

No.	Component group	Description
1	Misc.	Inspection / maintenance - No evidence - No deduction
2	Screen cleaning	Wiper arm - rear (Abdeckung) - Missing - Replace
3	Trim / covers	Door trim - rear left side - Scratch(es) - Loss in value
4	Boot lid / rear door	Boot lid - Glued / labelled - De-glue / neutralise
5	Mudguard - left side	Mudguard - left side - dent(s) - Smooth repair work
6	2nd wheel set	1 alloy rim - Scratch(es) - Loss in value
7	Door - front right side	Door - dent(s) - Smart repair
8	Front bumper	Front bumper - Scratch(es) - Smart repair
9	2nd wheel set	1 alloy rim - Scratched - Loss in value
10	Boot lid / rear door	Boot lid - Dent / paintcoat damage - Smart repair
11	2nd wheel set	2 tyres - Does not meet the leasing specifications - Replace
12	Door - rear left side	Door (Läufer) - Unprofessionally repaired - Repair and paint
13	Door - front left side	Door - Deformed - Repair and paint
14	Rear bumper	Rear bumper (Weillig und Dellen) - Unprofessionally repaired - Repair and paint
15	Door - rear right side	Door - Scratch(es) - Paint
16	Body	Body - Damage by hail - Smooth repair work

### Wear and tear

No.	Component group	Description
1	Mudguard - right side	Mudguard - right side - dent(s) - No deduction
2	Vehicle glazing	Windscreen - Stone chips - No deduction
3	Bonnet	Bonnet - Stone chips - No deduction
4	Door - front left side	Door handle - outside - Scratch(es) - No deduction
5	Side panel - rear left side	Side panel - dent(s) - No deduction

The vehicle shows signs of wear commensurate with its age and use.

### Missing parts





## Description

Documents - Owner's manual

## Previous damages

No.	Previous damage	Extent of damage (Net)
1	Rear, Side - left, Provided by user / customer, from 25 Nov 2024	3.353,53 €

## Repainting

### No. Repainting

- 1 Side panel - rear left side, Door - front left side, Professionally carried out
- 2 Bumper rear, Unprofessionally carried out
- 3 Door - rear left side, Unprofessionally carried out

## Paint coat thickness measurement

Side panel - rear left side	815 µm	Door - rear left side	170 µm
Door - front left side	187 µm		

## Order/Scope of order

The order was placed to prepare a sales report for the vehicle described. This includes the following:

- Description of core relevant information about the vehicle
- Documentation of equipment features  
(Delivery by third-party service providers)
- Documentation of damage, defects, missing parts
- Documentation of previous damage, unrepaired previous damage, repainting
- a brief visual or functional inspection of the equipment details if possible.  
(Functional tests of driver assistance systems are not included in the scope of services!)
- a photo documentation of the vehicle

## Basis for the order

This product is based on the Alphabet Fuhrpark GmbH guidelines for vehicle returns and valuations. The expert makes the explicit findings in each individual case objectively within the framework of the specified standards based on his or her own expertise.

The vehicle inspection takes place in a disassembled state.

Damage or defects that can only be detected during disassembly/diagnosis work or through advanced knowledge remain within the scope of the prognosis risk. An extended risk exists for concealed defects caused by fraudulent deception and not identifiable by the expert.

Damage or defects resulting from normal use or wear and tear of the vehicle will be accepted according to the applicable standard.

There was no explicit identification or monetary consideration of the expected features within the product.

Features which in their nature and severity slightly exceed normal use but do not constitute unacceptable damage will be documented and identified under signs of use if necessary.

Damage or defects which, according to the underlying standard, can no longer be attributed to normal use or wear and tear are listed in the product under "Depreciating Factors".

Depending on the product specification, a monetary ID can be provided. If this takes place, the costs can be 100% d or pro rata depending on the vehicle's age and mileage.



## Previous damages

According to available information previous damages were repaired at the vehicle. Traces of repairs, which allow conclusions about the area of repair, were not recognizable during the inspection.



**Figure 1:** Diagonal front (left)



**Figure 2:** Diagonal front (right)



**Figure 3:** Diagonal rear (left)



**Figure 4:** Diagonal rear (right)



**Figure 5:** Interior - front



**Figure 6:** Interior - rear





Figure 7: Instrument cluster



Figure 8: Instrument panel



Figure 9: interior 360° view



Figure 10: Cargo area

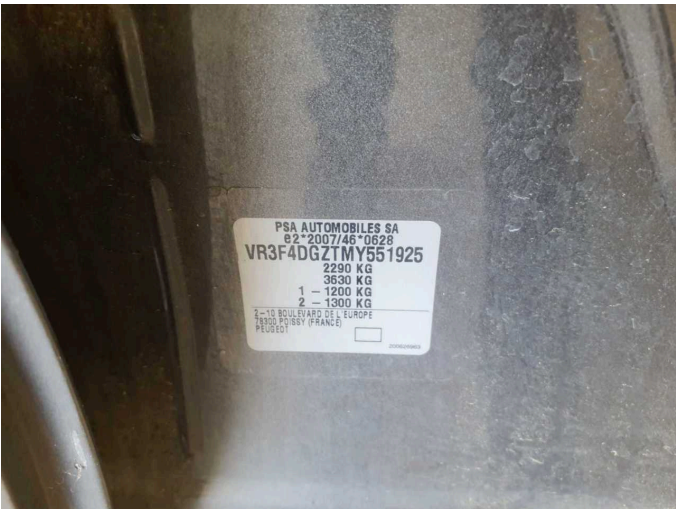


Figure 11: VIN



Figure 12: Mounted tyres



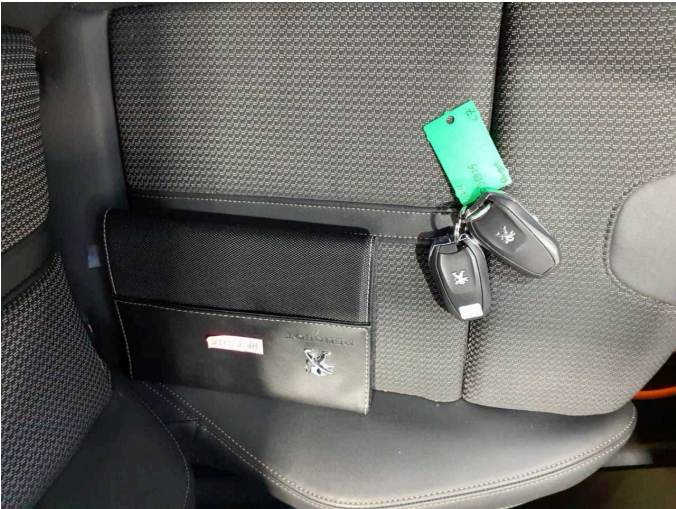


Figure 13: Documents



Figure 14: Additional tyres

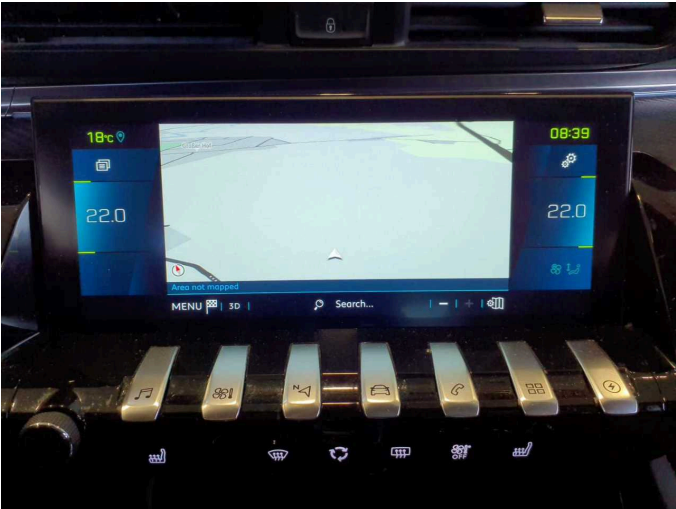


Figure 15: Navigation



Figure 16: Misc.

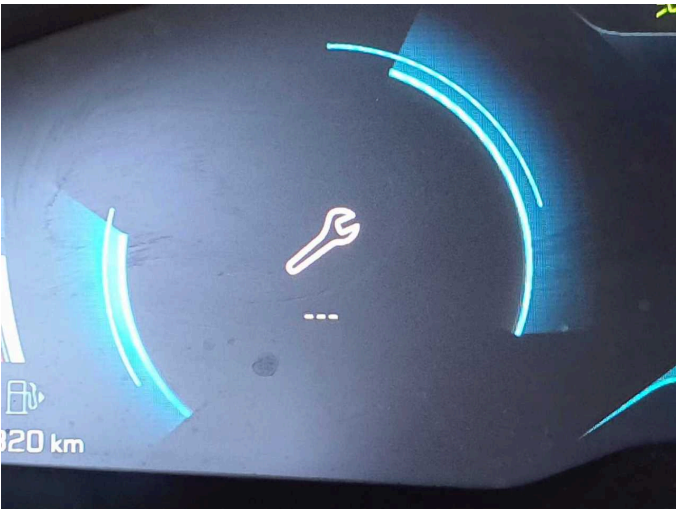


Figure 17: Misc.



Figure 18: Misc.





Figure 19: Misc.



Figure 20: Misc.



Figure 21: Misc.

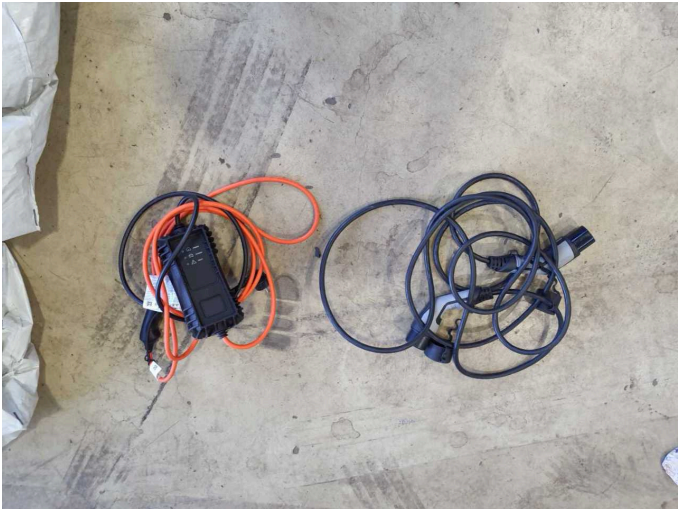


Figure 22: Misc.



Figure 23: Misc.



Figure 24: Misc.





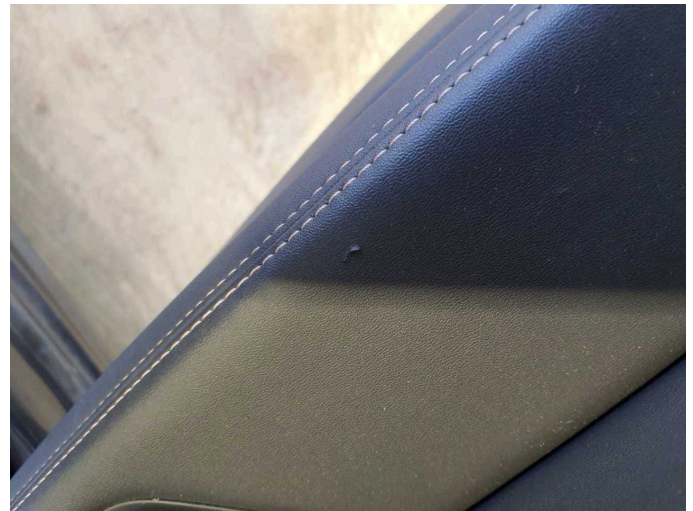
**Figure 25:** Misc.



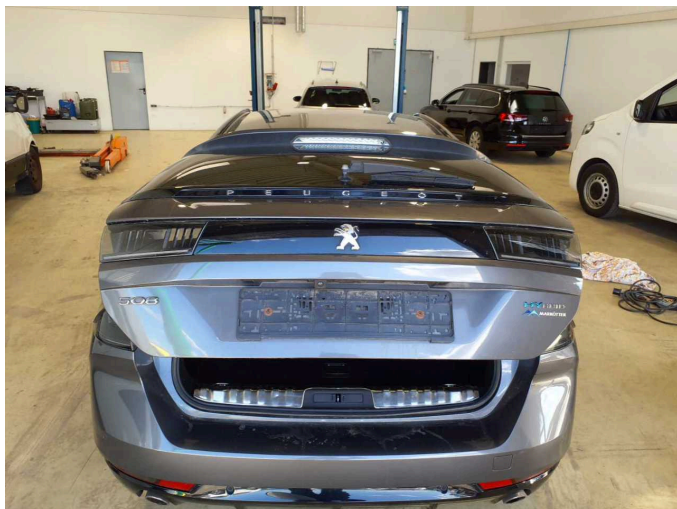
**Damage 2:** Screen cleaning: Wiper arm - rear (Abdeckung) - Missing - Replace



**Damage 3:** Trim / covers: Door trim - rear left side - Scratch(es) - Loss in value



**Damage 3:** Trim / covers: Door trim - rear left side - Scratch(es) - Loss in value



**Damage 4:** Boot lid / rear door: Boot lid - Glued / labelled - De-glue / neutralise



**Damage 4:** Boot lid / rear door: Boot lid - Glued / labelled - De-glue / neutralise





**Damage 5:** Mudguard - left side: Mudguard - left side - dent(s) - Smooth repair work



**Damage 5:** Mudguard - left side: Mudguard - left side - dent(s) - Smooth repair work



**Damage 6:** 2nd wheel set: 1 alloy rim - Scratch(es) - Loss in value



**Damage 6:** 2nd wheel set: 1 alloy rim - Scratch(es) - Loss in value



**Damage 6:** 2nd wheel set: 1 alloy rim - Scratch(es) - Loss in value



**Damage 7:** Door - front right side: Door - dent(s) - Smart repair





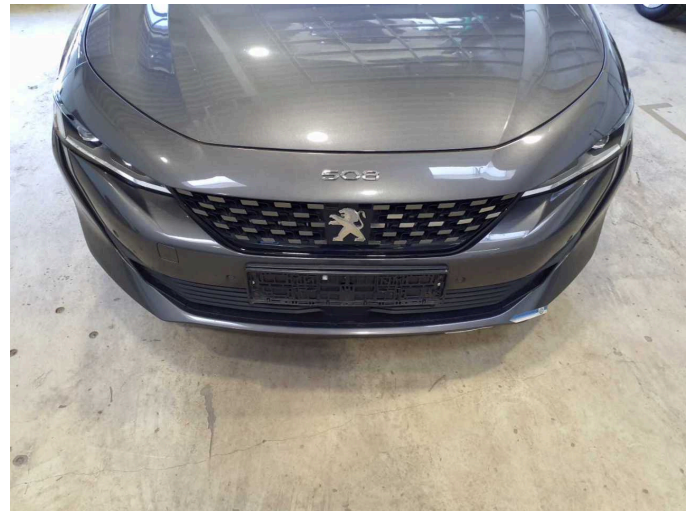
**Damage 7:** Door - front right side: Door - dent(s) - Smart repair



**Damage 7:** Door - front right side: Door - dent(s) - Smart repair



**Damage 7:** Door - front right side: Door - dent(s) - Smart repair



**Damage 8:** Front bumper: Front bumper - Scratch(es) - Smart repair



**Damage 8:** Front bumper: Front bumper - Scratch(es) - Smart repair



**Damage 8:** Front bumper: Front bumper - Scratch(es) - Smart repair





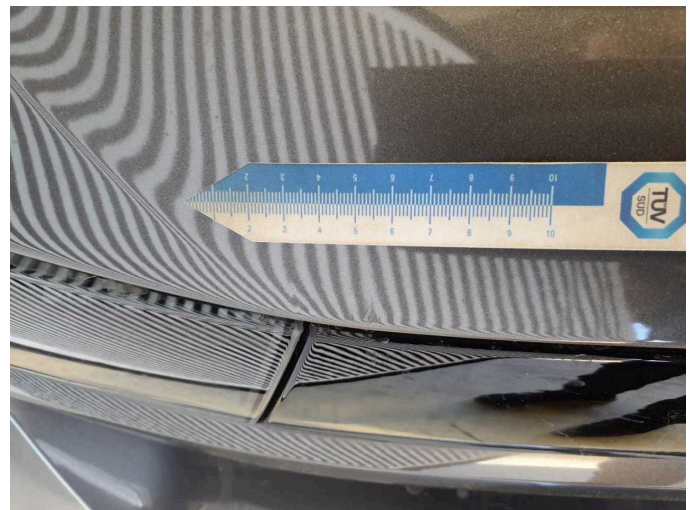
**Damage 9:** 2nd wheel set: 1 alloy rim - Scratched - Loss in value



**Damage 9:** 2nd wheel set: 1 alloy rim - Scratched - Loss in value



**Damage 10:** Boot lid / rear door: Boot lid - Dent / paintcoat damage - Smart repair



**Damage 10:** Boot lid / rear door: Boot lid - Dent / paintcoat damage - Smart repair



**Damage 11:** 2nd wheel set: 2 tyres - Does not meet the leasing specifications - Replace



**Damage 11:** 2nd wheel set: 2 tyres - Does not meet the leasing specifications - Replace





**Damage 11:** 2nd wheel set: 2 tyres - Does not meet the leasing specifications - Replace



**Damage 11:** 2nd wheel set: 2 tyres - Does not meet the leasing specifications - Replace



**Damage 11:** 2nd wheel set: 2 tyres - Does not meet the leasing specifications - Replace



**Damage 11:** 2nd wheel set: 2 tyres - Does not meet the leasing specifications - Replace



**Damage 11:** 2nd wheel set: 2 tyres - Does not meet the leasing specifications - Replace



**Damage 12:** Door - rear left side: Door (Läufer) - Unprofessionally repaired - Repair and paint





**Damage 12:** Door - rear left side: Door (Läufer) - Unprofessionally repaired - Repair and paint



**Damage 12:** Door - rear left side: Door (Läufer) - Unprofessionally repaired - Repair and paint



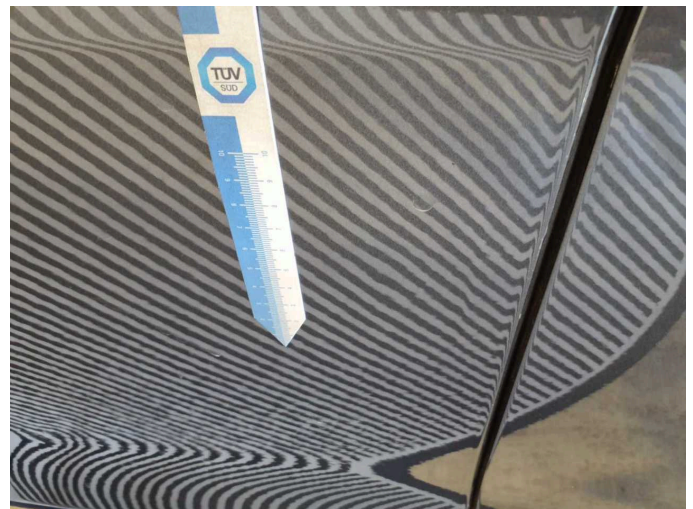
**Damage 12:** Door - rear left side: Door (Läufer) - Unprofessionally repaired - Repair and paint



**Damage 13:** Door - front left side: Door - Deformed - Repair and paint



**Damage 13:** Door - front left side: Door - Deformed - Repair and paint



**Damage 13:** Door - front left side: Door - Deformed - Repair and paint





**Damage 13:** Door - front left side: Door - Deformed - Repair and paint



**Damage 14:** Rear bumper: Rear bumper (Weilig und Dellen) - Unprofessionally repaired - Repair and paint



**Damage 14:** Rear bumper: Rear bumper (Weilig und Dellen) - Unprofessionally repaired - Repair and paint



**Damage 14:** Rear bumper: Rear bumper (Weilig und Dellen) - Unprofessionally repaired - Repair and paint



**Damage 15:** Door - rear right side: Door - Scratch(es) - Paint

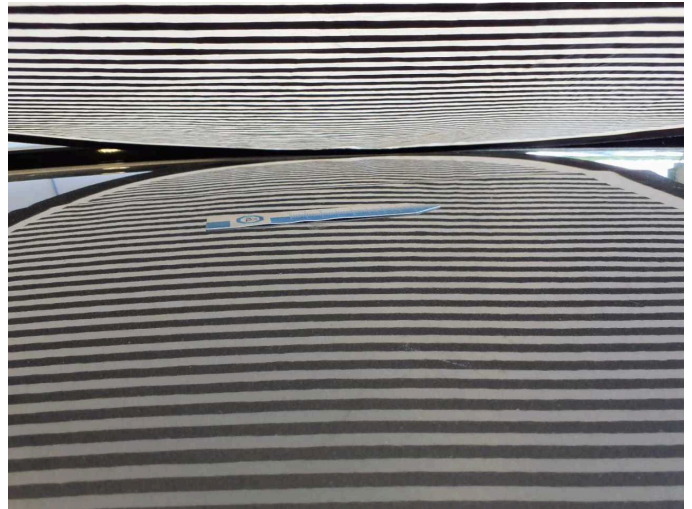


**Damage 15:** Door - rear right side: Door - Scratch(es) - Paint





**Damage 16:** Body: Body - Damage by hail - Smooth repair work



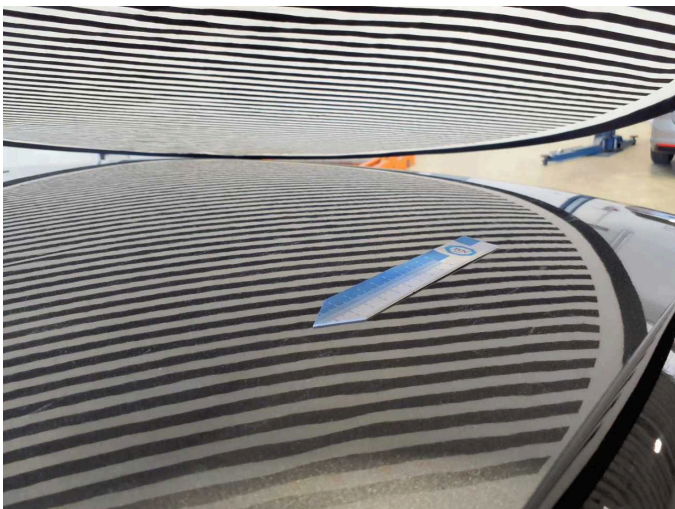
**Damage 16:** Body: Body - Damage by hail - Smooth repair work



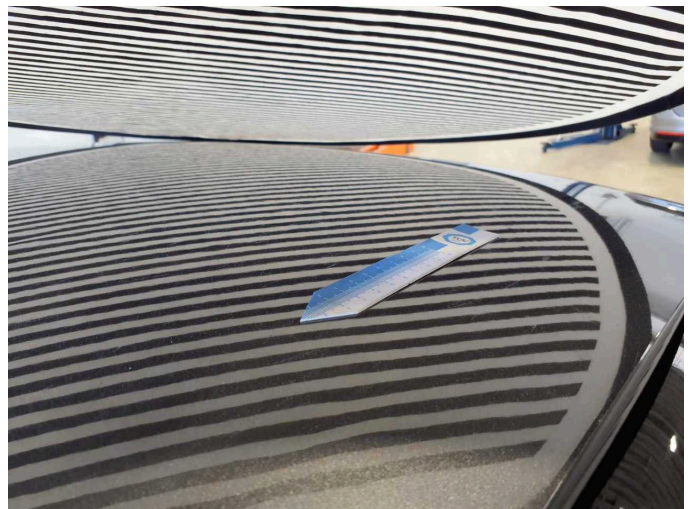
**Damage 16:** Body: Body - Damage by hail - Smooth repair work



**Damage 16:** Body: Body - Damage by hail - Smooth repair work



**Damage 16:** Body: Body - Damage by hail - Smooth repair work



**Damage 16:** Body: Body - Damage by hail - Smooth repair work





**Wear and tear 5:** Side panel - rear left side: Side panel - dent(s) - No deduction



**Wear and tear 5:** Side panel - rear left side: Side panel - dent(s) - No deduction



**Repainting 1:** Side panel - rear left side, Door - front left side



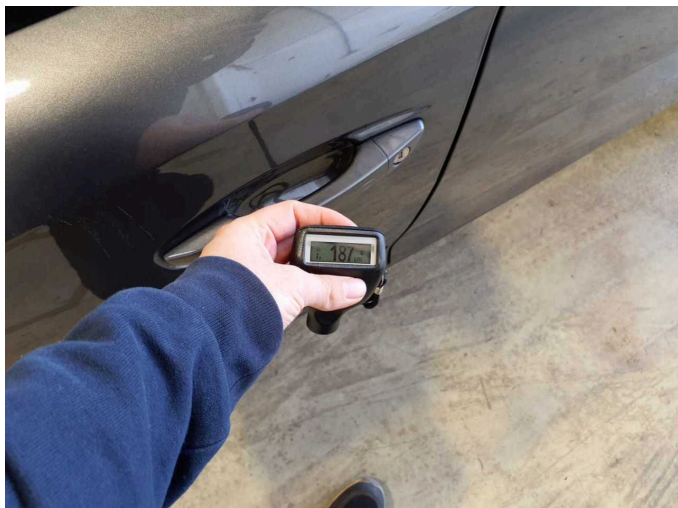
**Repainting 1:** Side panel - rear left side, Door - front left side



**Repainting 1:** Side panel - rear left side, Door - front left side



**Repainting 1:** Side panel - rear left side, Door - front left side



**Repainting 1:** Side panel - rear left side, Door - front left side



**Repainting 1:** Side panel - rear left side, Door - front left side