



Expertise

Protocol number: 39649459
Order No. / Reference: 24718336
Inspection date: 6 May 2025

Manufacturer: Volvo	Model: XC40 D3 Momentum Pro
VIN: YV1XZ72V1L2263863	



Vehicle details	
Manufacturer / Type / Model / Equipment	
Volvo XC40 D3 Momentum Pro	
Vehicle Identification number	YV1XZ72V1L2263863
Mileage (Read)	146,274 km
First registration	28 Jan 2020
Number of holders	1
Power / Engine displacement	110 kw / 1,969 ccm
Fuel type / Cylinder	Diesel / 4
Gearbox / Number of gears	Manual / 6
Type of drive	Front drive
Type of vehicle	SUV
Colour / colour code	Black Stone
Doors / Seats	5 / 5
Upholstery type	Cloth / leather combination
Colour of upholstery	Beige-Light grey



Vehicle details			
Maintenance booklet / proof	digital proof / complete	Next maintenance in	255 Tag(e)
Last maintenance on / at	01/2025 at 140,464 km		
Key is / should be	2 / 3	FZG documents	ZB#2 (B) was available (copy), ZB#1 (S) was not available
		Letter No.	FP067127
Previous damage / Accident	None detectable	Repainting	Detectable
Inspection conditions	Sufficient	Lifting equipment / pit	yes
Test drive	Not performed	Engine function test	Performed
Manufacturer key number/ type code number	9101 / BMD 00023		
Emission standard	EURO6;WLTP;DG;PI/CI; M, N1 I	Fine dust sticker	
Permitted total weight	2,120 kg	Empty weight	

Tyres				
Mounted tyres				
#	Tyre size	Type of tyre	Manufacturer	Tread depth
1)	235/55 R18 104H	Winter tyres on Light alloy	Goodyear	5mm / 5mm
2)	235/55 R18 104H	Winter tyres on Light alloy	Goodyear	8mm / 8mm
Replacement				
Typ	Tyre size	Type of tyre	Manufacturer	Tread depth
	Tirefit	Expiration date 10/2024		

Legend: Tread depth information for tires on the left is in the first place, for tires on the right is in the second place on the axle in the direction of travel

Equipment

Standard equipment

- Driver and passenger side airbags with two-stage deployment system
- Airbag, side airbags for driver and front passenger and curtain/shoulder airbags (IC) for all occupants
- Attention warning
- Fold-out (bag) hook on the glove compartment
- Heated exterior mirrors and rear window
- Hill start assist
- Brake light, third
- Connected Safety
- Roof rails made of satin aluminum (integrated)
- Digital instrumentation
- Drive Mode (driving mode settings for engine, transmission, steering and brakes)
- Parking aid, rear
- Electronic stability control including understeer control
- Electric windows front and rear
- Speed limit (variable)
- Transmission: 6-speed manual transmission
- Automatic tailgate
- Rear window wiper
- interior lighting, extended
- ISOFIX mount for the outer rear seats
- Parental controls
- Headrests fixed at the rear
- Front headrests
- Lane Keeping Aid (LKA)
- Leather gearshift lever
- Steering wheel: Leather steering wheel in 3-spoke design with plain decorative inlay
- Make-up mirror for driver, illuminated
- Front center armrest with integrated storage compartment
- emergency brake lights
- Optical underbody protection front and rear in high-gloss silver
- Radio: Sensus Connect infotainment system with HIGH PERFORMANCE SOUND
- Radio accessories: USB port in the center tunnel (front and rear)
- Road Edge Detection
- Run-off Road Protection
- Wheels: Tire sealant (Incl. 12-volt compressor, top speed 80 km/h)
- Power steering, speed-dependent
- Seats: Passenger seat length adjustable
- Seats: Lumbar support (4-way electrically adjustable) for driver and front passenger seat
- Voice control
- 12 volt socket in the luggage compartment
- Textile floor mats front and rear
- Airbag, passenger side can be switched off
- Airbag, knee airbag for driver
- active seat belts with belt tensioners
- Anti-lock braking system (ABS) with electronic brake force distribution
- Electrically foldable exterior mirrors
- Hill descent assistant
- Indicators (LED) integrated in exterior mirrors
- City Safety
- roof edge spoiler
- diesel particulate filter
- tachometer
- through-loading hatch behind the center armrest in the rear
- insert aluminum insert URBAN GRID
- Electronic differential lock
- Chassis: Dynamically designed
- Automatic brake
- Cruise control system
- Belt height adjustment at the front
- Rear window, heated
- Interior and exterior mirrors automatically dimming
- Intelligent Driver Information System
- Keyless start
- air conditioning with electronic single-zone temperature control
- Paint finish: Uni
- LED headlight "Thor's Hammer"
- Steering wheel adjustable for height and length
- Steering wheel: Multifunction buttons on the steering wheel in black
- Rear center armrest with two integrated cup holders
- Sensus navigation system
- Oncoming Lane Mitigation
- Parking brake (electric)
- Upholstery: Textile/T-Tech (Textile Concrete)
- Radio accessories: Smartphone integration Apple CarPlay and Android Auto
- Rain sensor
- Tire pressure monitoring system
- Road Sign Information - Traffic Sign Recognition
- Wheels: Light alloy wheels 18" 5-spoke design (7.5 x 18" with tires 235/55 R18)
- Rear seats in 60/40 or completely foldable
- Seats: Passenger seat height adjustable
- Seats: Driver's seat height and length adjustable including tilt adjustment
- Seats: Whiplash Protection System WHIPS
- Start/Stop technology
- 12 volt socket at the front



- Glazing: Color glazing
- Volvo On Call with Wi-Fi hotspot and private car sharing function
- Immobiliser
- Central locking with two radio remote controls and integrated emergency keys

Extra equipment

- Trailer hitch (semi-electric)
- Windscreen, heater
- automatic climate control with 2-zone temperature control
- Package: Business Package Pro (Sensus Connect infotainment system with PREMIUM SOUND by Harman Kardon -9" (22.9 cm) touchscreen -600 W, 13 speakers -Fresh Air subwoofer -Bluetooth hands-free system including audio streaming -Internet access, Internet radio and apps (via paired smartphone) -Voice control - Digital vehicle operating instructions -Connected Service Booking Inductive smartphone charging system)
- Package: Cargo Space Package Pro (Luggage compartment partition net - Foldable cargo floor with fastening system for carrier bags in the luggage compartment - Electric folding headrests of the 2nd row of seats - Keyless Drive (electronic entry system) with sensor-controlled tailgate, waterproof micro key, illuminated door handles and floor lights - Storage compartment under the driver's seat)
- Package: Park Assistant Package (front and rear parking aid - rear view camera)
- Package: Seat Comfort Package (Electrically adjustable driver and front passenger seat with memory function for driver seat and exterior mirror settings (stored in radio remote control) - leg rest adjustable (manually) for driver and front passenger seat)

- First aid kit and warning triangle
- Lashing eyes (four) in the luggage compartment
- Preparation for Trailer Stability Control (TSA)
- Warning tone/indicator when seat belts are not fastened (for all seats)

- Parking aid, front and rear
- IntelliSafe Surround (Blind Spot Information System - Blind Spot Assistant including lane change warning of rapidly approaching vehicles, including steering intervention if warning signals are ignored - Cross Traffic Alert - Cross-traffic warning with braking intervention - Warning of vehicles, cyclists, and pedestrians approaching from the side when reversing out of a parking space, including braking to a standstill if warning signals are ignored - Rear Impact Mitigation - Preventative protection in the event of an impending rear-end collision)
- Package: Lights (LED fog lights - headlight cleaner - full LED headlights "Thor's Hammer" with dynamic cornering light, high beam assistant, automatic headlight range control and integrated LED daytime running lights. Additional interior lighting: - ambient lighting (multiple) front/rear - exit lights at the front - illuminated door shelves at the front, cup holders at the front, decorative inlays - decorative lighting in the front doors - lighting on the rear side of the center console - reading lights at the rear - work light on the luggage compartment lid)
- Package: Winter package (heated front seats - heated windshield washer nozzles)
- Radio accessories: Digital radio reception (DAB+)
- Rear view camera
- Glazing: Side and rear windows tinted (from B-pillar)

Brief expert findings

Documents submitted	At the time of the inspection, the registration certificate part 2 (letter) was available, but the registration certificate part 1 (certificate) was not available. (Copy)
VIN comparison	The vehicle identification number (VIN) was read and the undersigned verified that it matched the documents submitted during the inspection.
Inspection	The inspection conditions were sufficient for the assessment of the vehicle. Lifting equipment and a pit were available for examining the vehicle.
Test drive	No test drive/maneuvering was carried out during the inspection of the vehicle.
Engine function test	An engine test run was performed.

Value reducing factors

No.	Component group	Description
1	Equipment	Tirefit filler - Due - Replace
2	Fuel system	Tank cap - Scratch(es) - Smart repair
3	Bonnet	Insulation lining - Damage caused by marten / rodent - Replace
4	Mudguard - right side	Mudguard - right side - Scratch(es) - Repair and paint
5	Mudguard - left side	Mudguard - left side - Scratch(es) - Repair and paint



No.	Component group	Description
6	Vehicle glazing	Windscreen (Kratzer und) - Stone chips - Replace

Wear and tear

No.	Component group	Description
1	Body	Body - Scratch(es) - No deduction

The vehicle shows signs of wear commensurate with its age and use.

Missing parts

Description

Equipment - Vehicle key (Wasserfester Mikroschlüssel)

Repainting

No. Repainting

1	Side panel - rear right side, Door - rear right side, Door - front right side, Professionally carried out
---	---

Paint coat thickness measurement

Side panel - rear right side	279 µm	Door - rear right side	288 µm
Door - front right side	258 µm		

Order/Scope of order

The order was placed to prepare a sales report for the vehicle described. This includes the following:

- Description of core relevant information about the vehicle
- Documentation of equipment features
(*Delivery by third-party service providers*)
- Documentation of damage, defects, missing parts
- Documentation of previous damage, unrepaired previous damage, repainting
- a brief visual or functional inspection of the equipment details if possible.
(*Functional tests of driver assistance systems are not included in the scope of services!*)
- a photo documentation of the vehicle

Basis for the order

This product is based on the Alphabet Fuhrpark GmbH guidelines for vehicle returns and valuations. The expert makes the explicit findings in each individual case objectively within the framework of the specified standards based on his or her own expertise.

The vehicle inspection takes place in a disassembled state.

Damage or defects that can only be detected during disassembly/diagnosis work or through advanced knowledge remain within the scope of the prognosis risk. An extended risk exists for concealed defects caused by fraudulent deception and not identifiable by the expert.

Damage or defects resulting from normal use or wear and tear of the vehicle will be accepted according to the applicable standard.

There was no explicit identification or monetary consideration of the expected features within the product.

Features which in their nature and severity slightly exceed normal use but do not constitute unacceptable damage will be documented and identified under signs of use if necessary.

Damage or defects which, according to the underlying standard, can no longer be attributed to normal use or wear and tear are listed in the product under "Depreciating Factors".

Depending on the product specification, a monetary ID can be provided. If this takes place, the costs can be 100% d or pro rata depending on the vehicle's age and mileage.



Previous damages

Apparently, no repaired previous damage could be found on the vehicle.



Figure 1: Diagonal front (left)



Figure 2: Diagonal front (right)



Figure 3: Diagonal rear (left)



Figure 4: Diagonal rear (right)



Figure 5: Interior - front



Figure 6: Interior - rear



Figure 7: Instrument cluster



Figure 8: Instrument panel



Figure 9: interior 360° view



Figure 10: Cargo area

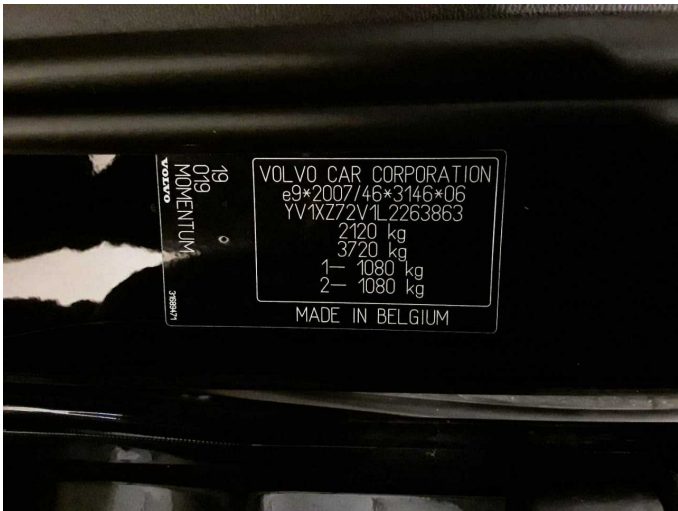


Figure 11: VIN



Figure 12: Mounted tyres



Figure 13: Documents



Figure 14: Documents

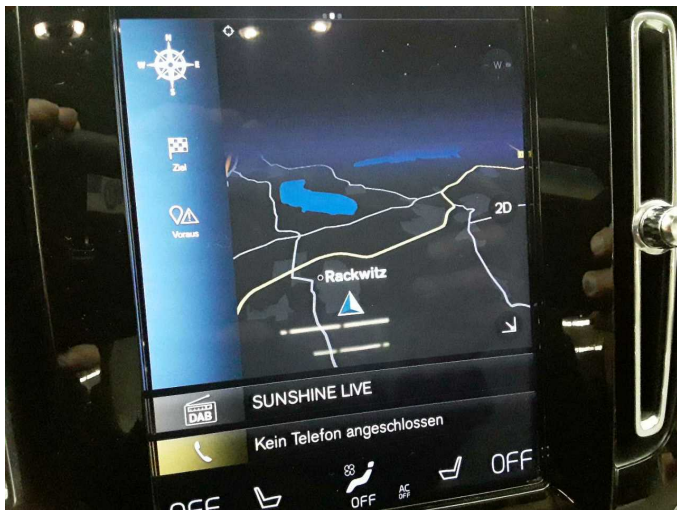


Figure 15: Navigation



Figure 16: Misc.



Figure 17: Misc.



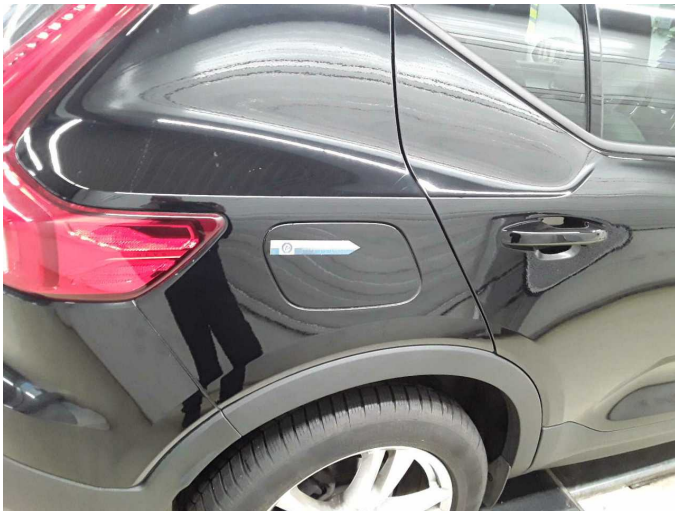
Figure 18: Misc.



Figure 19: Misc.



Damage 1: Equipment: Tirefit filler - Due - Replace



Damage 2: Fuel system: Tank cap - Scratch(es) - Smart repair



Damage 2: Fuel system: Tank cap - Scratch(es) - Smart repair



Damage 3: Bonnet: Insulation lining - Damage caused by marten / rodent - Replace



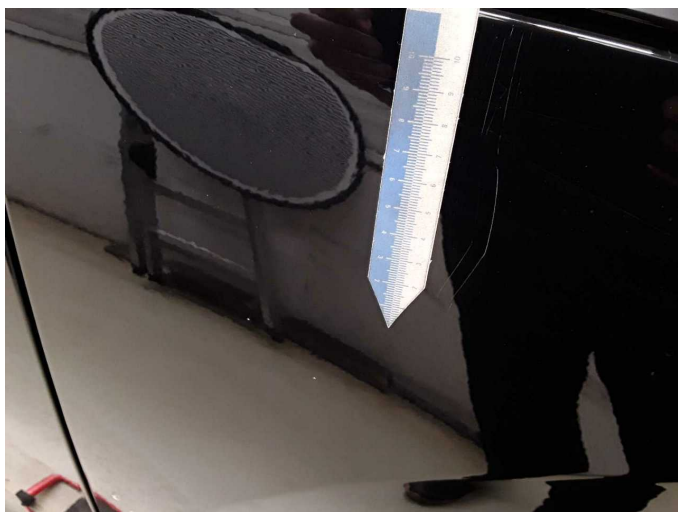
Damage 3: Bonnet: Insulation lining - Damage caused by marten / rodent - Replace



Damage 4: Mudguard - right side: Mudguard - right side - Scratch(es) - Repair and paint



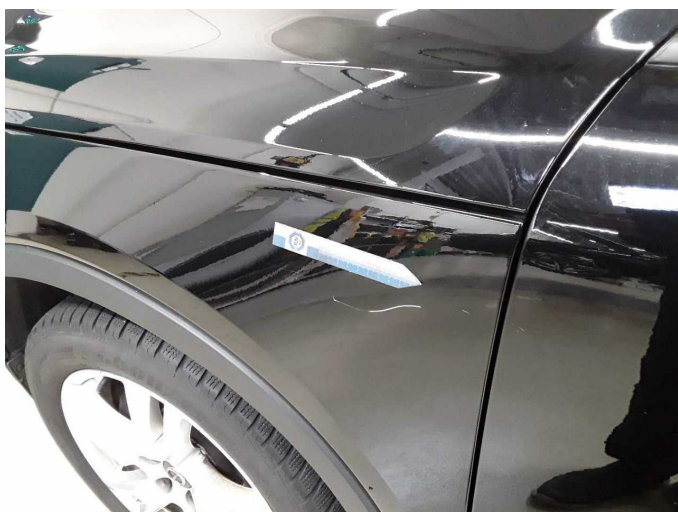
Damage 4: Mudguard - right side: Mudguard - right side - Scratch(es) - Repair and paint



Damage 4: Mudguard - right side: Mudguard - right side - Scratch(es) - Repair and paint



Damage 5: Mudguard - left side: Mudguard - left side - Scratch(es) - Repair and paint



Damage 5: Mudguard - left side: Mudguard - left side - Scratch(es) - Repair and paint



Damage 5: Mudguard - left side: Mudguard - left side - Scratch(es) - Repair and paint



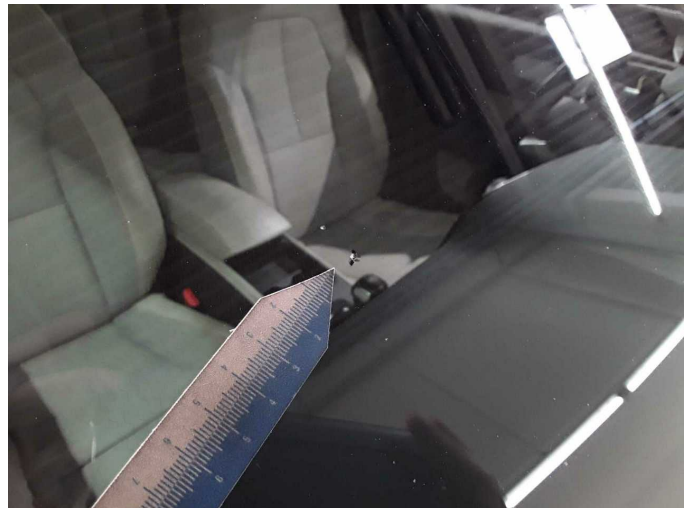
Damage 6: Vehicle glazing: Windscreen (Kratzer und) - Stone chips - Replace



Damage 6: Vehicle glazing: Windscreen (Kratzer und) - Stone chips - Replace



Damage 6: Vehicle glazing: Windscreen (Kratzer und) - Stone chips - Replace



Damage 6: Vehicle glazing: Windscreen (Kratzer und) - Stone chips - Replace



Damage 6: Vehicle glazing: Windscreen (Kratzer und) - Stone chips - Replace



Side panel - rear right side: 279 µm



Side panel - rear right side: 279 µm



Door - rear right side: 288 µm



Door - rear right side: 288 µm



Door - front right side: 258 µm



Door - front right side: 258 µm